

Pukhraj
Divine
2 & 3 BHK Living Concept



Concept || Comfort || Convenience ||



Pukhraj
Divine *The Living Concept*

Transforming Modern Living....

Pukhraj - the process of transformation, morphing the basic into the elegant, something ordinary into something special, amplifying the beauty of simplicity.

This is the cornerstone of every Pukhraj Project.

From barren land to exquisite landscapes; blue prints to architectural masterpieces, rooms to living spaces, dreams to reality, we are transforming your view of the world and the way the world views you.





Concept || Comfort || Convenience ||

Your own **PRIDE OF POSSESSION**

Pukhraj DIVINE is home to a state-of-the-art living where each home is a beautiful blend of modern design concepts and traditional ideas of fine living.

Be it the enclave layout or individual home, you will find an unmatched attention to detail, impeccable workmanship and advanced construction techniques. Stringent quality and robust reliability are built-in from foundation to the rooftop.



- Premier Location**
- Comprehensive Quality**
- New-Age Amenities**
- Indoor Games**
- Basement & Stilt Floor Parking**

Your own **COCOON OF SAFETY**

Homes at **Pukhraj DIVINE** have an inbuilt sense of security. A host of invisible and intuitive security systems constantly monitor the main entrance, apartment alleys and outdoor zones to secure your and your family's confidence.

The security guards at the entrance and around the property are the frontline of safety and act as effective deterrents against any undesired elements.

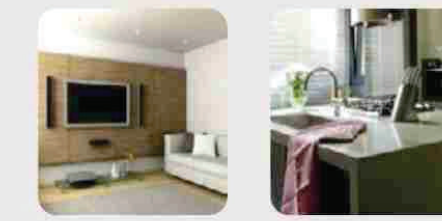


- 24 X 7 Security**
- Visitors' Management**
- Access Control**
- Guest Room Concept**
- State-of-the-art Gym**

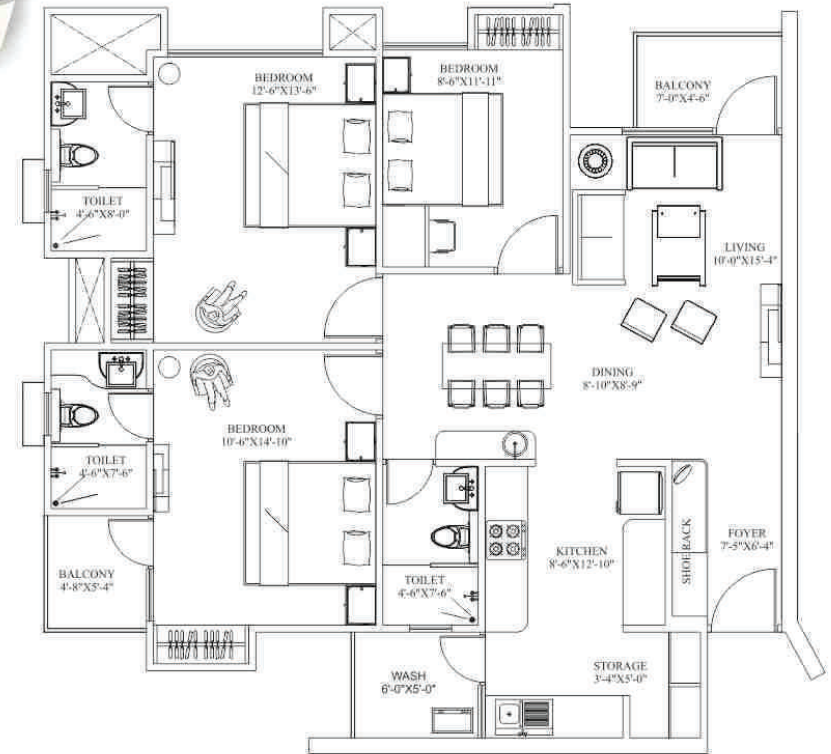
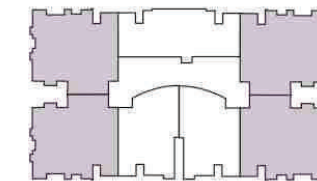
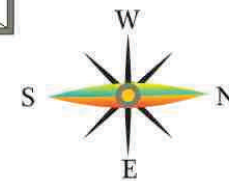
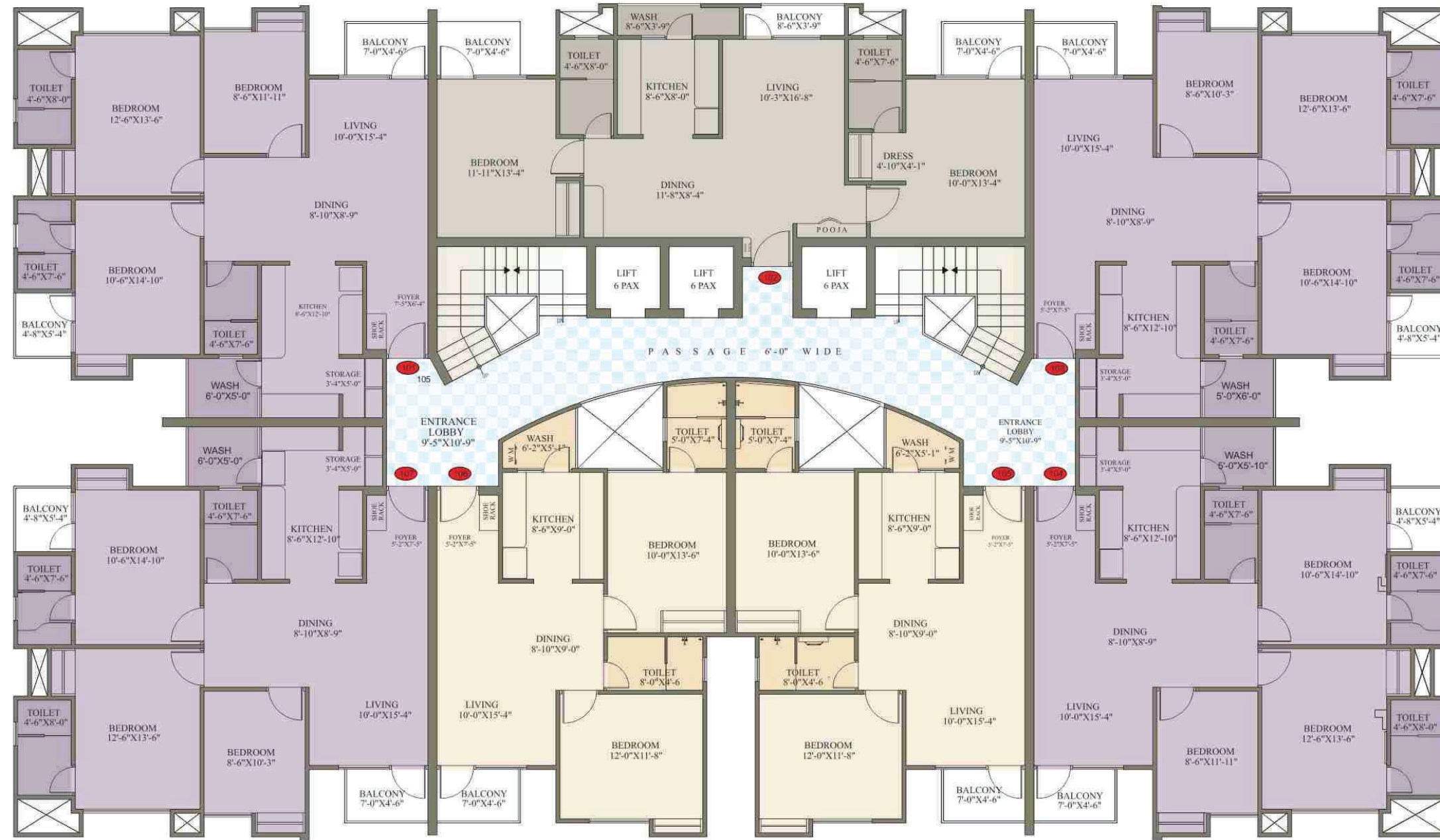
Your own **LANDMARK OF LUXURY**

Laid back luxury awaits you at **Pukhraj DIVINE**. Expansive living rooms, with ample windows, extend into balconies that bask in the morning sunshine.

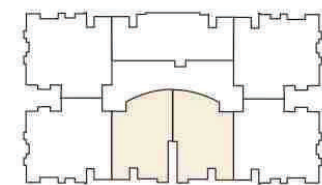
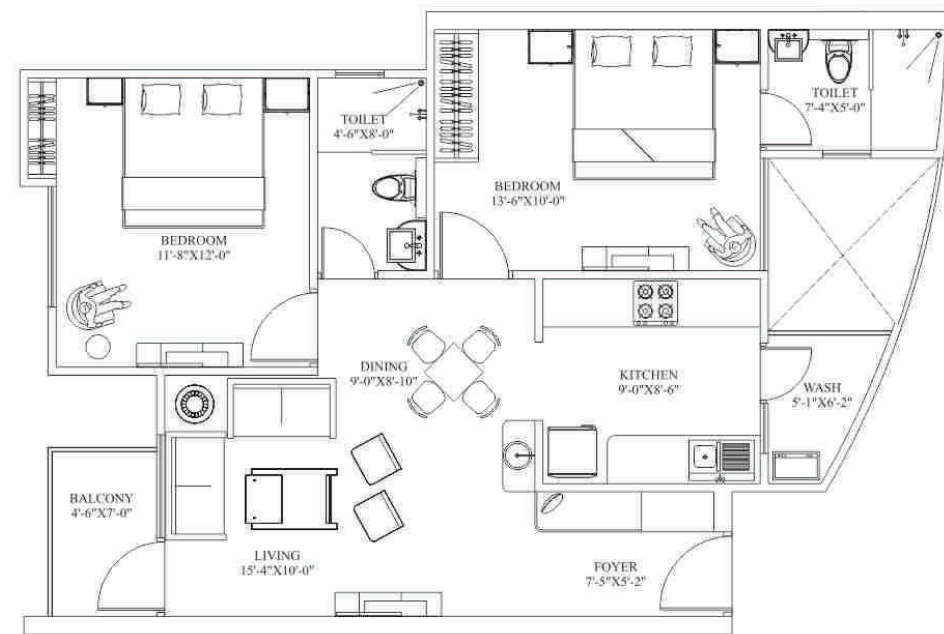
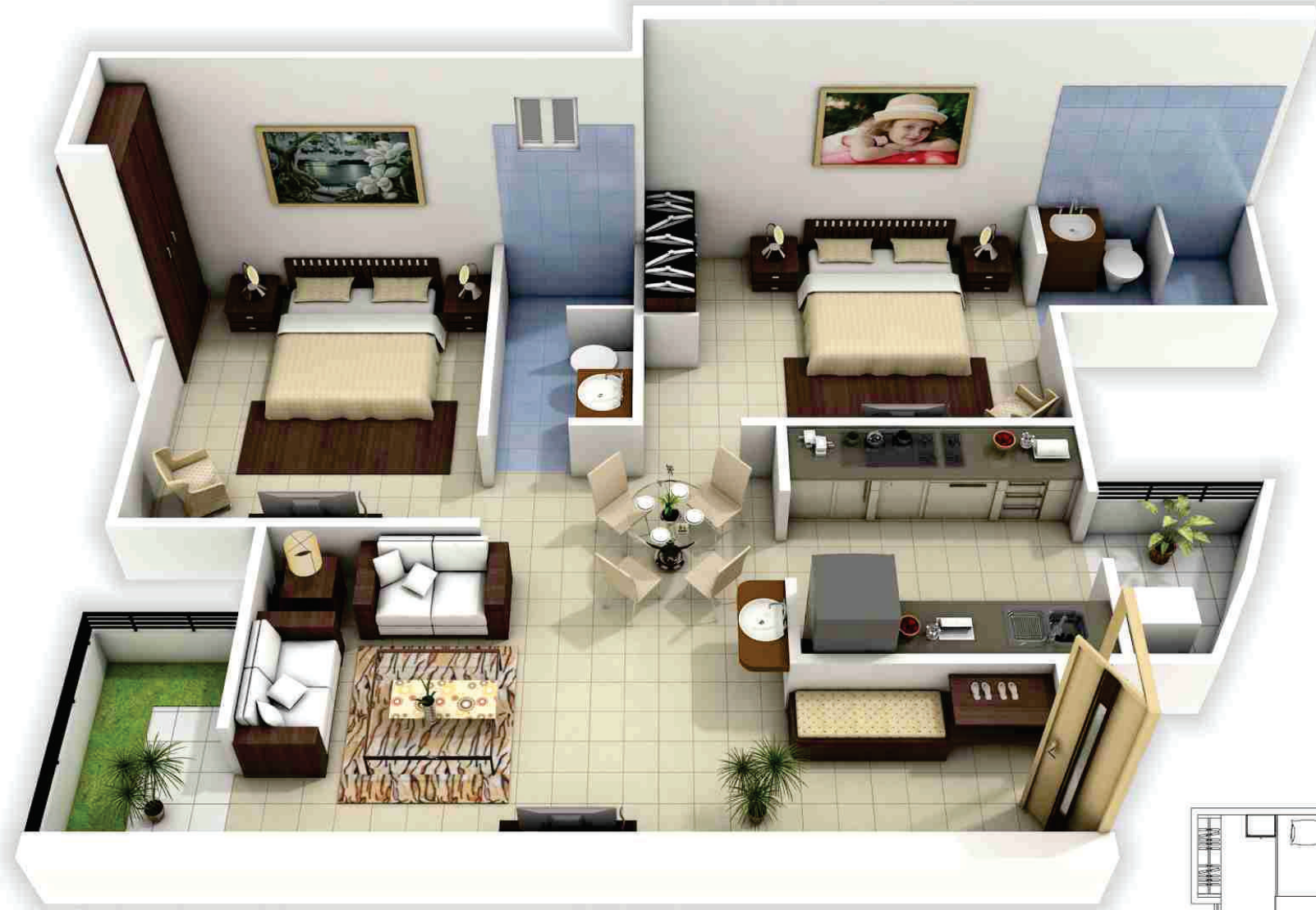
Spacious bedrooms give each member of the family their own private quarters of luxury & comfort. The bathroom offers ample space for you to creatively customize it into your personal retreat.



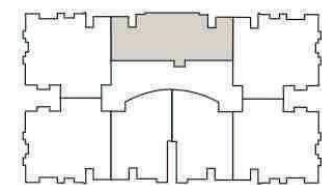
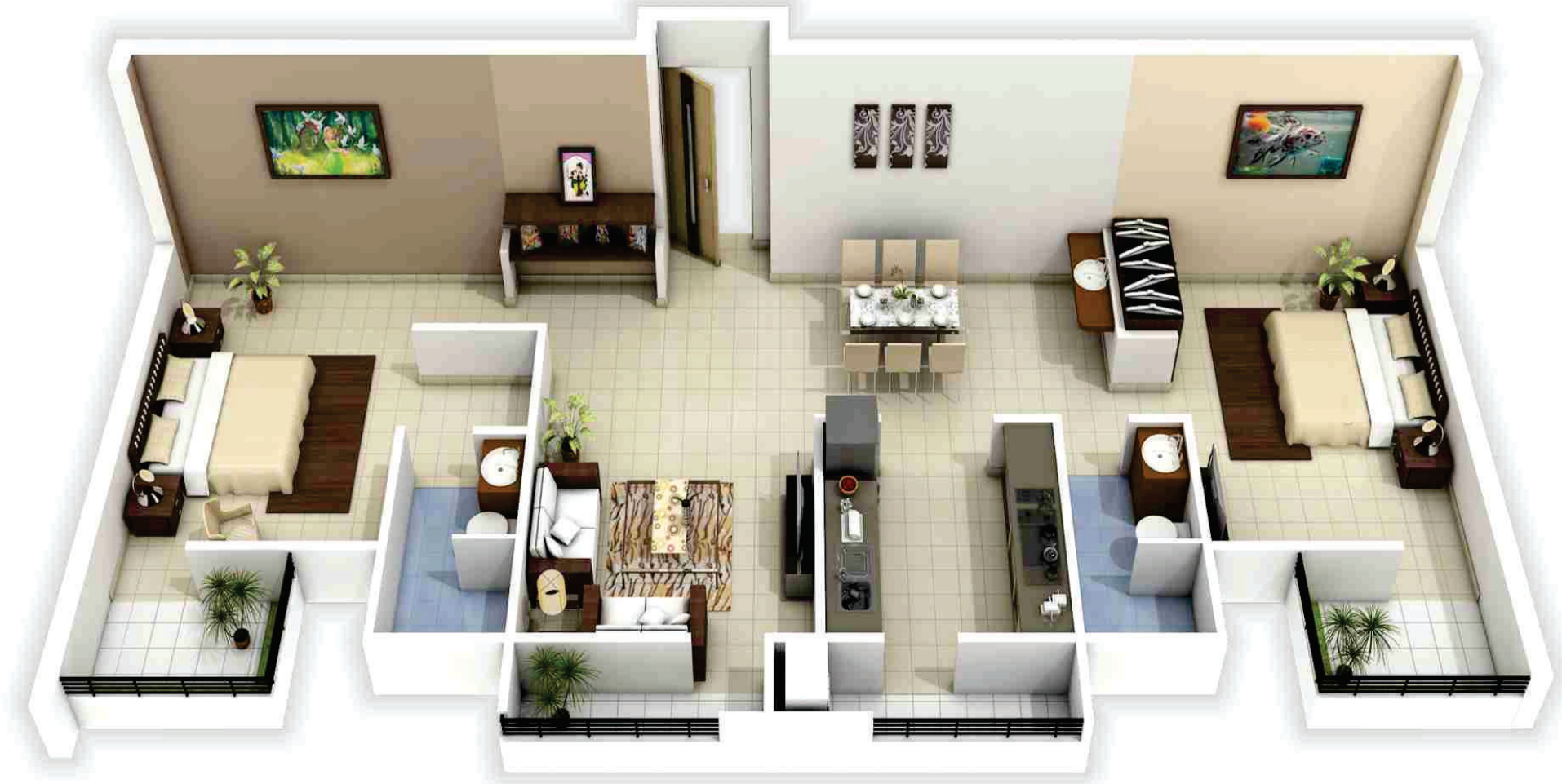
- King Size Bedrooms**
- Excellent View from Balcony**
- Designer Bathrooms**
- Grand Entrance**
- Rainwater Harvesting**



2 BHK 1124.11 Sq.Ft.



2 BHK 1335.79 Sq.Ft.



Your own UNMATCHED FEATURES

LOCATION ADVANTAGE

Pukhraj DIVINE give you the Best Convenient Location in the Heart of the Kota City having a wide 150 ft. frontage on well Connected 80 feet wide linked road (New Bus Stand - Baran Road) surrounded by the fastest developing Residential area of Kota City. The easy accessibility from main road to the **Pukhraj DIVINE**.

SPACIOUS APARTMENTS

A generous space will provide every room and all the areas to enjoy, cheer & celebrate all the movements during your life time.

SPACIOUS BALCONY

Generous balcony area will allow to enjoy relaxing moments during early morning and evening. A grand view of the surrounding luxurious landscape is an additional bonus. The balcony attached to the living and dining area in **Pukhraj DIVINE** apartments gives a beautiful view of the area.

VAASTU FRIENDLY

Pukhraj DIVINE is vastu friendly with complete east facing view

MODULAR KITCHEN

All apartments at **Pukhraj DIVINE** come with modular kitchen till counter level with granite top and stainless steel sink.

CLUB HOUSE AND RECREATION FACILITIES

Pukhraj DIVINE will have an enviable mix of recreation and sports facilities for the entire family, incorporating a multi purpose/ party room, gym, along with recreational facilities like jogging track, fitness walk & table tennis with fully furnished two Spacious Guest Rooms

HIGH SPEED ELEVATORS

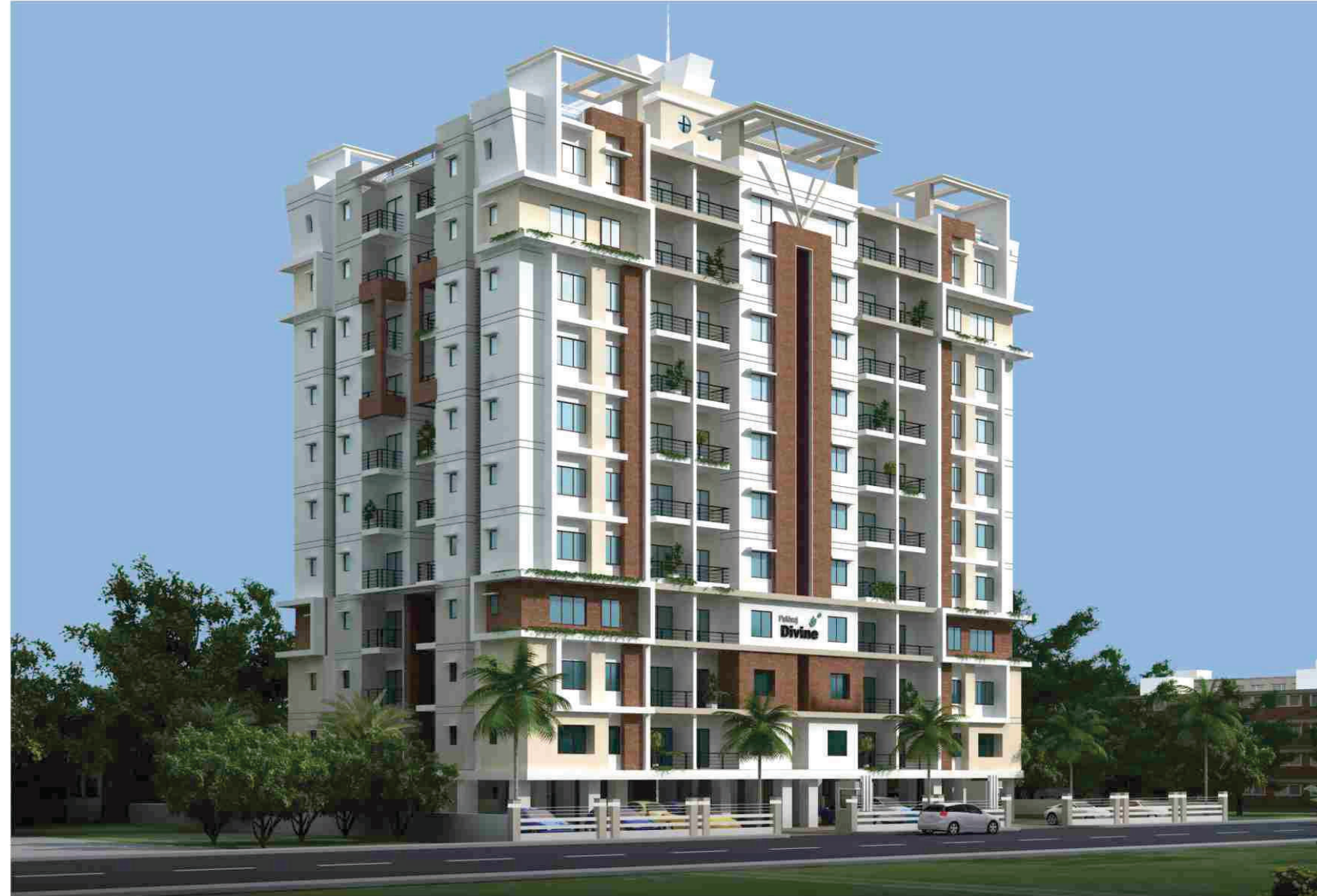
Pukhraj DIVINE are equipped with high speed, spacious, well decorated elevators.

STORAGE

Ample recesses are provided for all bedrooms that are in addition to the stated room sizes. This provides for full capability for you to enable built in wardrobes or cupboards or to simply procure a elegantly designed spacious wardrobe as you desire. So storage problems become a thing of the past.

COMPLEX MANAGEMENT

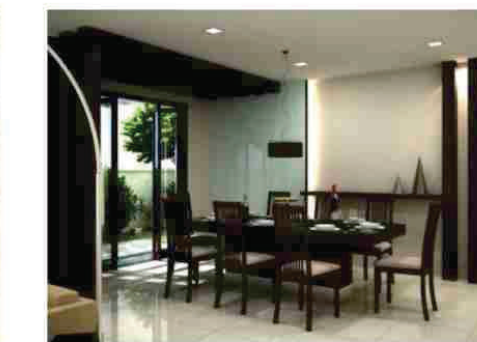
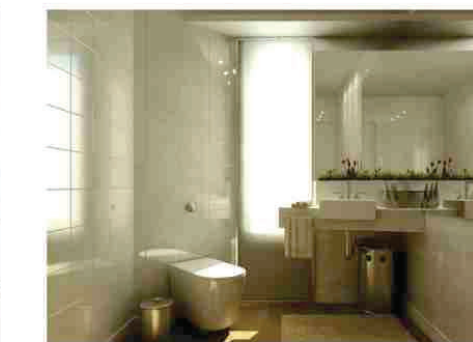
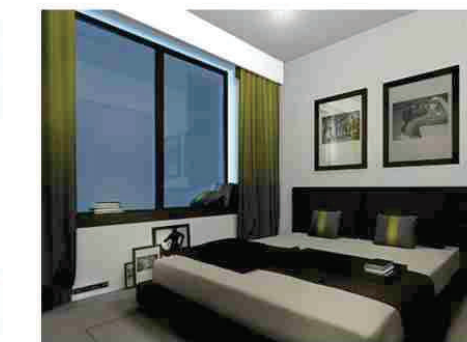
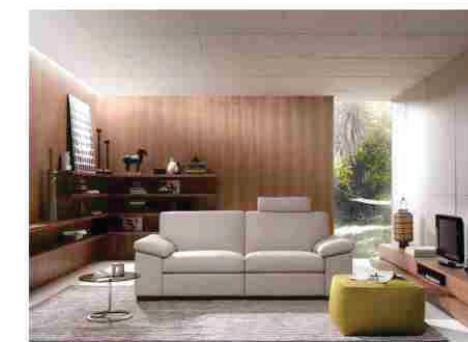
The facilities and the infrastructure of the complex shall be maintained by a professional property management consultants/ Resident's Society.



Specifications

AREAS	WALLS	FLOOR	DOORS	WINDOW / GLAZING	OTHERS	SWITCHES
LIVING ROOM / DINNING	Pop Punning With Plastic Emulsion Paint	Vitrified Tiles	Entrance Door : Designer Laminated Flush Door/ Designer Compressed Door	Aluminium / UPVC		Modular Switches
MASTER BED ROOM	Pop Punning With Plastic Emulsion Paint	Vitrified Tiles	Wooden Flush Door/ Designer Compressed Door	Aluminium / UPVC	Optional Wooden Flooring	Modular Switches
OTHER BED ROOMS	Pop Punning With Plastic Emulsion Paint	Vitrified Tiles	Wooden Flush Door/ Designer Compressed Door	Aluminium / UPVC		Modular Switches
Kitchen	Tiles Upto 2 Feet Above The Counter Area	Porstlene Tiles	Wooden Flush Door/ Designer Compressed Door	Aluminium / UPVC	Modular Kitchen Till Counter Level, Granite Counter Top With S.S.Sink	Modular Switches
Balconies / Terraces	Weather Proof Paint	Ceramic Tiles	Wooden Flush Door/ Designer Compressed Door	Aluminium / UPVC		Modular Switches
Toilets	Designer Ceramic Tiles Till Door Height	Ceramic Tiles	Wooden Flush Door/ Designer Compressed Door	Aluminium / UPVC	Premium Quality C.P. Fittings, 24 Hours Water Supply	Modular Switches
Facilities	High Speed Elevators, 100% Power Back-up For Common Areas, Adequate Basement, Basement and Stilt Floor/Open Parking, Landscaped Areas With Sitting Space, Pedestrian Pathway, Rain Water Harvesting System, 24 Hours Water Supply, DTH Facility In Each Flat					
Club House	Club Experience: Multi Purpose Hall, Gymnasium/ Indoor Lounge For Reading/ Relaxation, Snooker Room, Table Tennis, Two Fully Furnished Guest Rooms					
Security	CCTV, EPBAX System & Perimeter Security.					

**Pukhraj
Divine**
2 & 3 BHK Living Concept



Concept || **Comfort** || Convenience ||

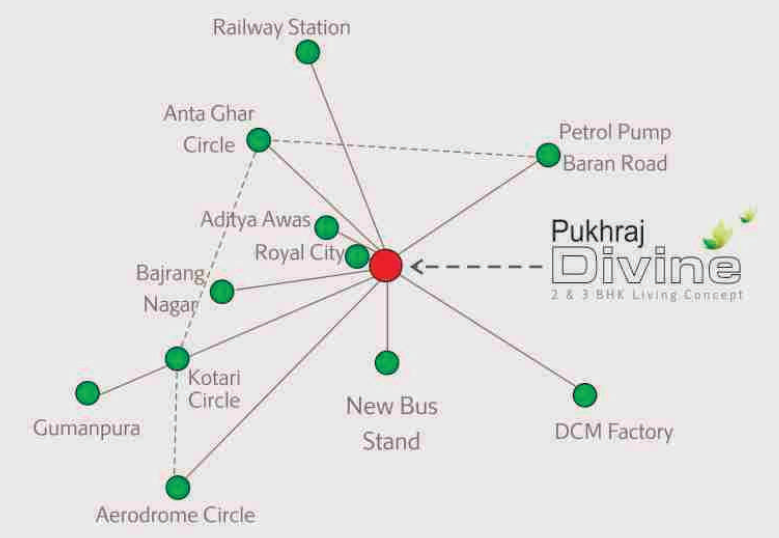


An Ideal Concept to Live...

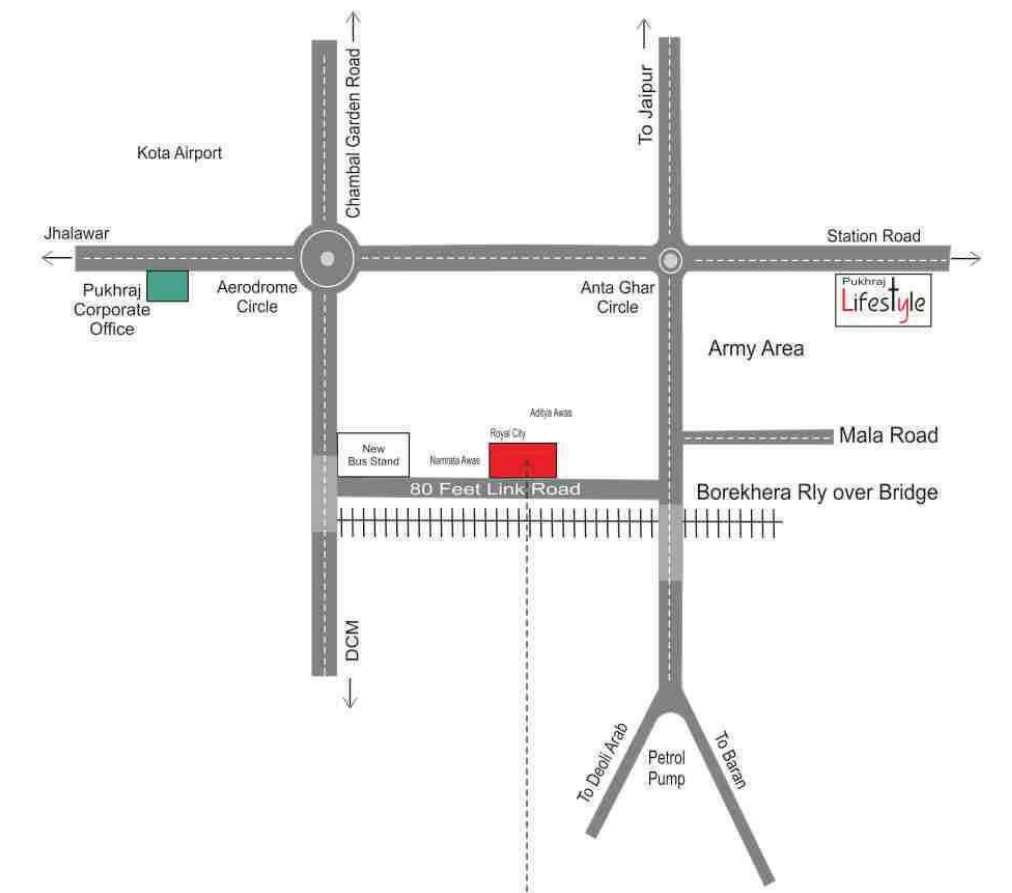


Pukhraj DIVINE give you the Best Convenient Location in the Heart of the Kota City having a wide 150 ft frontage on well Connected 80 feet wide linked road (New Bus Stand - Baran Road) surrounded by the fastest developing Residential area of Kota City. The easy accessibility from main road to the **Pukhraj DIVINE** gives you and your family the complete prime location advantage at unbelievable Price.

Aerodrome Circle	3Km.
New Bus Stand	800m.
Bajrang Nagar	1Km.
Railway Station	4Km.
Aditya Awas	200m.
Royal City	100m.
Kotari Circle	2.5Km.
Gumanpura	3Km.
DCM Factory	3Km.
Petrol Pump Baran Road	3Km.



LOCATION MAP



Pukhraj Divine
2 & 3 BHK Living Concept

Concept || Comfort || **Convenience** ||



Discover the Unmatched Facilities

- Gymnasium
- Lounge for carom, chess, card and table tennis
- Two dedicated furnished guest room for additional facilities
- A multi functional community Hall for family functions and ceremony
- 100% power backup for common areas and elevators
- All flats are Vastu Friendly with proper ventilation and sunlight all around
- Free intercom facilities for better communication
- Spacious balcony for relaxation
- Uninterrupted water supply with overhead and under ground water storage tank
- Rain water harvesting system



Concept || **Comfort** || Convenience ||

Our Running Project

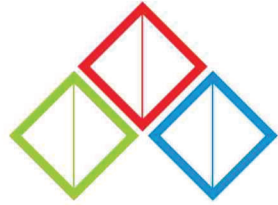


Pukhraj Lifestyle
Station Main Road, Opp RAPP Guest House, Kota Jn.

Our Upcoming Projects



Project By



Pukhraj Group
Happiness with no Boundaries

PUKHRAJ HOMES PVT. LTD

(A Unit of Pukhraj Group)

Corporate Office: 6, New Motor Market, 1st Floor
opp. Airport Gate, Above Bank of Maharashtra, Jhalawar
Road, Kota-324 007 (Raj.)
Ph. 0744-2366055

Site Office: Kh.No.291/1 Village Kotari, Back Site of Roayl
City, Aditya Awas Main 80-Foot Road, New Bus Stand-Baran
Road Link, Kota (Raj.)
Email :- pukhrajhomes@gmail.com
Web: www.pukhrajgroup.com

For Booking Contact:

9166440055

9636440055

ARCHITECTS

PrimeArt Architects (P) Limited



M +91 98281 37800
e : primeartarchitects@gmail.com
w : primeartarchitects.com

STRUCTURE CONSULTANT

PTDC, Jaipur

